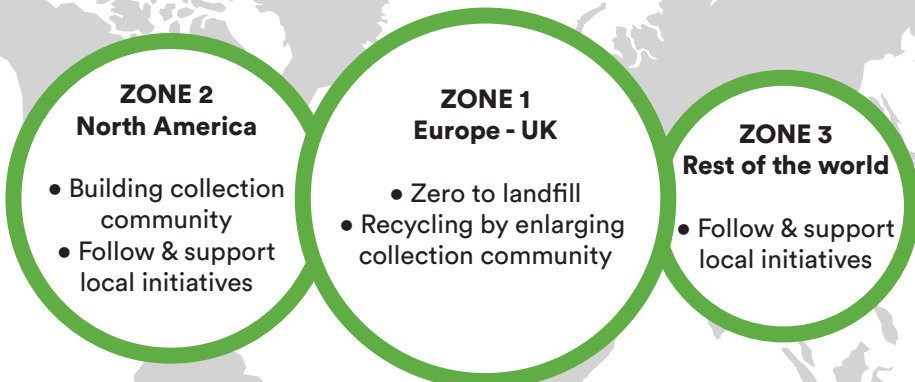
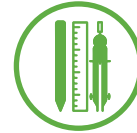


KeyKeg in the circular economy



ONECIRCLE



KeyKeg is designed to reuse as raw material after use to fit into a circular economy.



OneCircle was launched to create and implement collection networks in a number of countries and, where possible, adding to the existing waste streams.

REDUCE



A full truckload contains up to 35% more beverage. Return transport ships around 8000 kegs compressed in bales.



The packaging is around 5% of the total weight of the freight.



Water usage per filling is 0.5l on a KeyKeg compared to 8 – 20l on a steel keg.



We are using green energy and environmental programs in our production plants and supply chain.

RECYCLE



Together we build a large collection community to collect all kegs to be reused as raw materials for new kegs.



A KeyKeg is recyclable and fits in a circular economy.

MATERIAL REUSE



All production waste is reused in new kegs.



All PP is collected and used into grip rings and basecups. The griping and basecup contains 100% reused material.



KeyKeg exist already out of 39% reused material.

